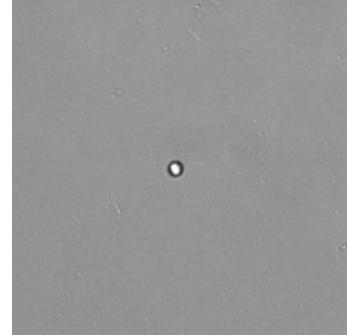


# Single Cell Cloning

## GENERAL PURPOSE

This application was developed to support the production of monoclonal cell lines. It represents an indispensable tool to verify the monoclonality of your cell line and to monitor the growth of your clone. Features like the *Clone Gallery* and a filter option to exclude undesired wells will guaranty a high level of security combined with a reduced amount of data to be stored.

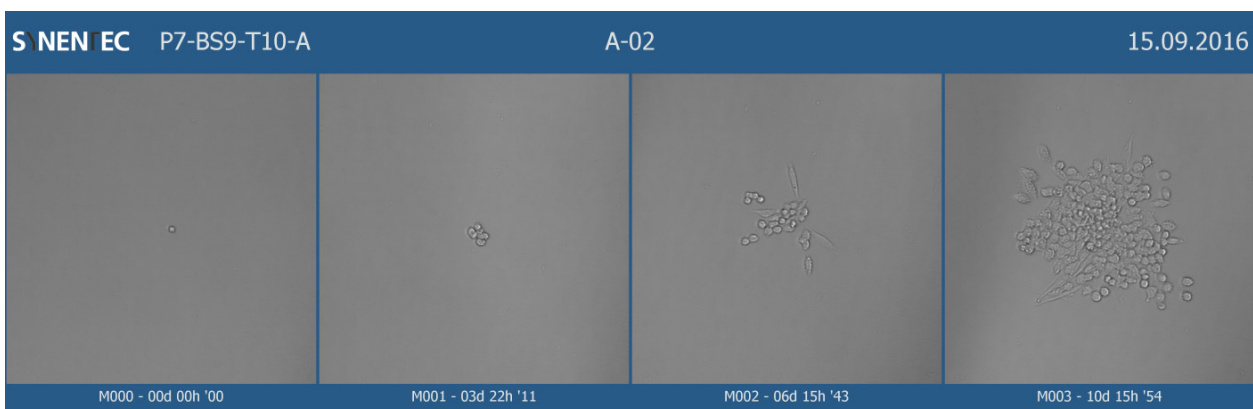


## RESULT TABLE

Colony Count	Number of seperate colonies
Cell Confluence	Percentage of the cell area on the evaluated area
Area of Colonies	Area covered by colonies per well in mm <sup>2</sup>
Cell Area	Area covered with cells in mm <sup>2</sup>

## EXAMPLE

This example shows the exported *Clone Gallery* of a colony in a typical single cell cloning experiment. To reduce the amount of data to a minimum, it was previously filtered by the *Colony Count* property and unusable wells were excluded via the *Clone Gallery*.



← Image based and time resolved backtracking of your colony to prove a single cell.