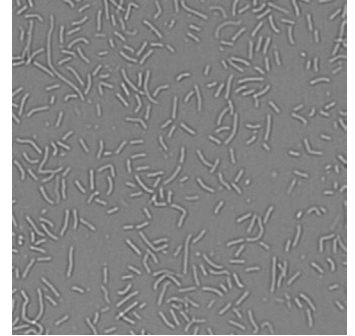


Bacteria Count

GENERAL PURPOSE

The Bacteria Count image analysis is used to recognize very small objects with only a few micrometer diameter, preferably in brightfield images. A prerequisite for the detection is that the objects lie next to each other as isolated as possible and that the focus position within an image is very stable. The focus offset must be adjusted in a way that the objects have a lens effect, dark edge and bright interior. If the bacteria can be stained well with a fluorescent dye, the operator can also be used for this type of image analysis.



RESULT TABLE

Bacteria Count	Number of detected objects per well
Avg Bacterium Intensity BC	Average intensity above background of all detected objects
Avg Bacterium Size	Average object size per well in μm^2
Sum of Bacteria Sizes	Area covered by objects per well in μm^2

EXAMPLE

The images show an example for the measurement of bacteria with the 20x lens. The green ellipses mark the detected objects.

